

## SeeStar S30 observing - EQ Mode and Galaxies- Tuesday April 1st

1 message

Larry McHenry <lsrch@comcast.net>

Wed, Apr 2, 2025 at 11:54 AM

To: oras io group <ORAS@groups.io>, "KiskiAstronomers@groups.io" <KiskiAstronomers@groups.io>

hi all,

Finally had the opportunity to test the new SeeStar EQ mode software/firmware release.

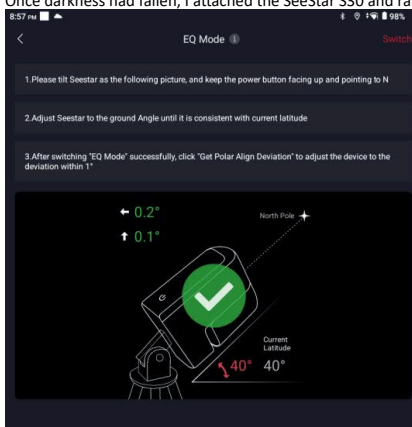
Prior to setting up for the evening, I had scrounge-around thru my various tripods looking for one that I was comfortable with holding the SeeStar as mounting the smart scope on a wedge puts it in a not-ideal balance position not centered over the tripod.

I ended up using my LX200 field tripod. (the 8" SCT scope is on a permanent concrete pier in my observatory). I already had a small wedge from my Sky-Watcher Star Adventurer kit so it was just a matter of adapting it to the LX200 field tripod.



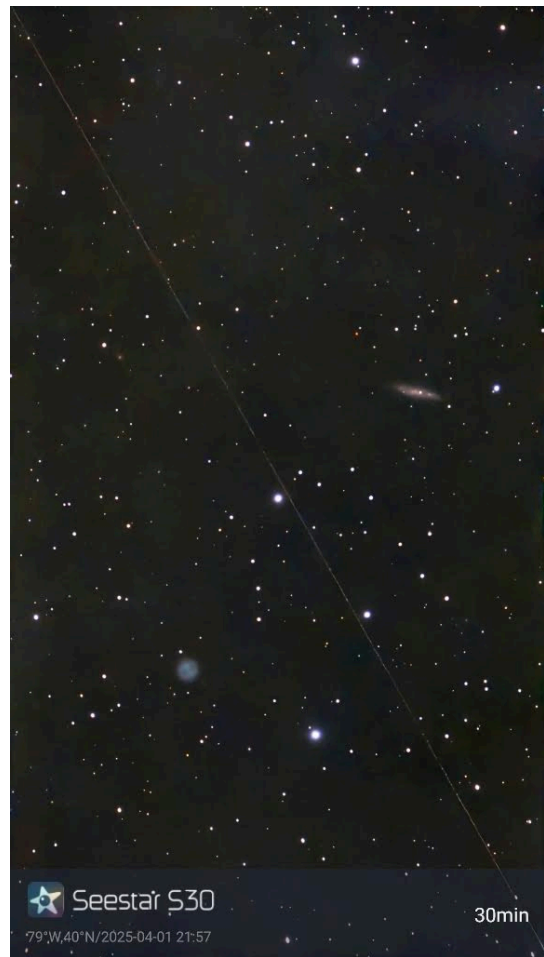
Following youtube instructions, I setup the tripod during daylight and using a compass did a rough polar alignment and leveled the mount.

Once darkness had fallen, I attached the SeeStar S30 and ran it thru the app's EQ mode initialization. Pretty Easy-Peazy!



Here's a few test images using EQ mode: all 20 second sub exposures, livestacked for about 30 minutes, internal IR filter, AI denoise enhanced.

M97 - 'Owl Nebula' and M108 'Surfboard Galaxy' in Ursa Major:

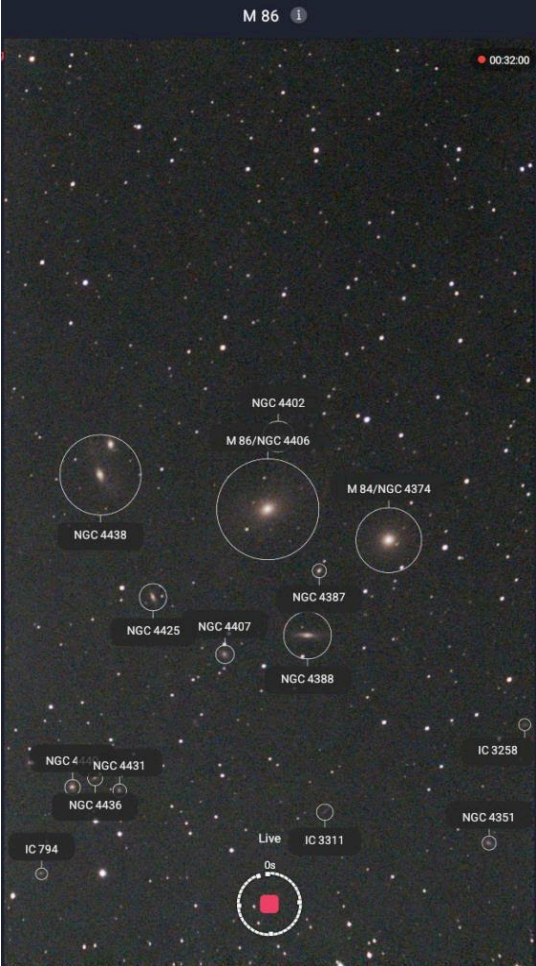


(I could have got rid of the satellite trail, but I kinda like how it bisects the frame diagonally, 😊 )

M64 - 'Blackeye Galaxy' in Coma Berenices:



M86 - heart of 'Markarians Chain' in Virgo:



Looks like a good successful test of the SeeStar EQ abilities, no sign of field rotation!  
Larry



S30-M86-Markarians-Chain-04012025.jpg  
375K